

Georgia Tech—Shenzhen

Annual Safety and Security Report

2021



Table of Contents

About Georgia-Tech Shenzhen	1
Preparation of the Annual Safety and Security Report	2
Public Safety	2
Security and Access to GT-Shenzhen Facility	4
Timely Warnings/Clery Act Safety Alerts	7
Emergency Response and Evacuation Procedures	8
Safety Abroad	8
Reporting Crime & Suspicious Behavior	13
Missing Persons.....	14
Institute Policy Statements	15
Alcohol & Drug Policies, Education, & Assistance	15
Sexual Assault, Dating or Domestic Violence, Stalking Prevention and Response	17
Definitions of Reportable Clery Act Crimes and Geography	31
Annual Security Report Crime Statistics.....	34
Annual Student Housing Fire Safety Report.....	35
Other Important Numbers.....	36

About Georgia Tech-Shenzhen

Georgia Tech-Shenzhen is an instructional site of the Georgia Institute of Technology and has enrolled students since August 2014. Currently it offers four degree programs - Master of Science in Electrical and Computer Engineering, Master of Science in Analytics, Master of Science in Computer Science and Master of Science in Environmental Engineering. The location of Georgia Tech-Shenzhen transitional campus for the campus fire safety report and crime statistics for 2020 is 133 Tangxing Road in the Nanshan District of Shenzhen, in south China, adjacent to Hong Kong. The following report covers three buildings, with Building B48 for faculty offices, classrooms, and other necessary facilities, Building B55 for student housing and Building B51 for research (which has not put into use at this time).

Georgia Tech-Shenzhen faculty and staff have extensive experience with the operation.



Preparation of the Annual Safety and Security Report

Georgia Tech-Shenzhen staff prepare this report, to comply with the Jeanne Clery Disclosure of Campus Security and Crime Statistics Act (Clery Act), in cooperation with the Georgia Tech Police Department (GTPD) and local police. Each of the offices provides updated information on its efforts to meet compliance requirements. This report provides statistics for the previous three years concerning reported Clery Act crimes that occurred on the transitional campus where classes take place and the student housing is located.

Georgia Tech distributes a notice of the availability of this Annual Safety and Security Report by October 1 of each year to every member of the Georgia Tech community. Hard copies of the report may be printed from GTPD websites. The report is located at:

www.police.gatech.edu

Members of the public may request a copy by contacting:
gtshenzhen@ece.gatech.edu
404-385-1341

Public Safety

Georgia Tech-Shenzhen is committed to providing a safe and secure environment for all faculty, staff and students. Though Georgia Tech-Shenzhen does not have its own police presence, it works in close collaboration with the Chinese local authorities and GTPD.

The Local Police Office

Georgia Tech-Shenzhen is under the jurisdiction of Tanglang Police Station.

Tanglang Police Station

No. 351, Tangxing Rd, Nanshan District
Shenzhen, Guangdong, China
Phone: +11 86 755 2655 2833

American Consulate in Guangzhou

The nearest U.S. Consulate General in Guangzhou to Georgia Tech-Shenzhen is located in Guangzhou, China, approximately 77 miles from the GT-Shenzhen transitional campus. The Consulate is able to provide several services to U.S. citizens, including passport requests, voting registration, notarial services, and assistance to citizens in need. There are 211 trains running both ways on the Guangzhou – Shenzhen route, 187 of them are high-speed trains

with the shortest duration of about 30 minutes. The trains run frequently from 06:00 to 23:00, which makes it very easy to travel to the U.S. Consulate General in Guangzhou.

During an emergent situation, American citizens should contact the after hours calling number for American citizen-related emergencies at (010) 8531-4000.

For non-emergencies, individuals may seek information on U.S. Citizen Services on the Embassy's Website: <https://china.usembassy-china.org.cn/u-s-citizen-services>

In the case of a lost or stolen passport, GT-Shenzhen faculty and students must be immediately reported to the local police station for issuance of a police report. They need to bring this police report to the local Exit and Entry Bureau for issuance of a Confirmation of Reporting the Loss of Passport.

The Confirmation of Reporting the Loss of Passport must also be presented to Chinese authorities when applying for a replacement Chinese visa to replace the Chinese visa in the lost/stolen passport. Failure to obtain a replacement Chinese visa can result in a fine and possible detention when attempting to exit China. Faculty and students must apply for a replacement passport in person with the U.S. Consulate.

Additionally, American citizens or permanent residents are also encouraged to create an account and enroll in the Smart Traveler Enrollment Program (STEP) (<https://step.state.gov/step/>), which is a free service to allow U.S. citizens and nationals traveling and living abroad to enroll their trip with the nearest U.S. Embassy or Consulate. They can receive important information from the U.S. Embassy about safety conditions in their destination country. The program helps the U.S. Embassy contact them in an emergency, whether natural disaster, civil unrest, or family emergency. It also helps family and friends get in touch with them in an emergency.

Below is the contact information for the U.S. Consulate General in Guangzhou and the U.S. Embassy in China.

U.S. Consulate General Guangzhou

43 Huajiu Rd, Tianhe District
Guangzhou, Guangdong Province
China, 510623
Tel: +86 20 3814 5775

U.S. Embassy in China

55 Anjialou Rd, Chaoyang District
Beijing, China, 100600
Tel: +86 10 8531 3000

Security and Access to GT-Shenzhen Facility

GT-Shenzhen classrooms, faculty offices and administrative offices are located in Building B48 at SoFunLand, 133 Tangxing Road. Students visit this building for classes, academic advising, social gathering and other administrative matters. GT-Shenzhen faculty apartments are also located on the fifth floor of Building B48.

The GT-Shenzhen student housing is located in Building B55 at SoFunLand, 133 Tangxing Road.

Security on GT-Shenzhen Transitional Campus

Shenzhen, where GT-Shenzhen lies, is a major city in south China, situated immediately north of Hong Kong. It has a population of approximately 15 million. Even though Shenzhen is one of the largest cities in the world, it is generally safe when compared to other urban areas of similar size. The following factors may contribute to the general safe conditions in Shenzhen:

- It is illegal to own guns in China.
- China has some of the world's harshest drug laws; use of illegal drugs is extremely rare.
- Shenzhen has a booming economy and low unemployment rate.
- The population density is high and people fill the streets even in the evenings.

Police presence is clearly visible throughout the city; that plus overt video surveillance in public spaces in the city both serve to deter crimes. Shenzhen is part of the Pearl River Delta region and is one of the most affluent areas of China. Violent crimes in this region are rare; most of the crimes are economic in nature.

The GT-Shenzhen buildings are serviced by a highly reputable property management company called Chang An Property Management Co. Ltd. This company has passed the international standards - ISO9001, ISO14001 and OHSAS18001 for quality assurance in the facilities management area. Security, custodial and maintenance services are provided by this company. The company has well established procedures to deal with safety and security issues.

Buildings B48 and B55 are guarded by security officers 24/7. In addition, security officers patrol all areas of the buildings regularly during the day and once every two hours during the evening and night hours. The buildings also has security camera installations. All major hallways and entrances/exits of the buildings are monitored 24/7. Security camera footage can be archived.

The buildings are equipped with a siren system to alert occupants of any immediate danger. They are also equipped with water hose cabinets, fire extinguishers, as well as fire-proof doors that can be dropped down with a push of a button to isolate fire in case it happens.

The local fire department conducts unannounced fire safety audits several times a year. The property management company also conducts fire drills a couple of times a year.



All GT-Shenzhen faculty and students are provided with a laminated emergency contact card shown below:

Front:

<u>GT-Shenzhen Emergency Contact Info</u>		
Police	Ambulance	Fire
110	120	119

***ALWAYS call on-site emergency staff in case of emergency**

On-Site Emergency Contact Information (country code 86):

***Yuan Zhang, Student Affairs Coordinator**
Tel: 184-7559-8953

GTSI
133 Tangxing Road
SoFunLand, Building B48
Nanshan District, Shenzhen, 518071, CHINA
深圳市南山区塘兴路133号集悦城B48栋（邮编：518071）

Back:

***ALWAYS call on-site emergency staff in case of emergency**

U.S Consulate in Guangzhou: 43 Hua Jiu Road, Zhujiang New Town, Tianhe District, Guangzhou, 广州市天河区珠江新城华就路 43 号
Tel: (020) 3814-5775 Fax: (020) 3814-5572
Consular After Hours Emergencies: (010) 8531-4000

Shenzhen University General Hospital
1098 Xueyuan Avenue, Xili University Town
Nanshan District, Shenzhen, 518055, CHINA
深圳大学总医院，深圳市西丽大学城学苑大道1098号
86(755) 2183 9999
1.3 km (0.8 mile) away from GT-Shenzhen.

Georgia Tech Campus Emergency Contact Information
In the unlikely event that you cannot reach any program staff in Shenzhen, contact the GT Police: +1 (404) 894-2500 24-hours a day.

Timely Warnings/Clery Act Safety Alerts

Should a situation arise, the on-site staff, who is the GT-Shenzhen Student Affairs Coordinator, will immediately be contacted to evaluate the situation and decide if it is an on-going or continuing threat to the community requiring a Clery Act Safety Alert, also known as a timely warning, to be issued.

The purpose of these Clery Act Safety Alerts is to notify the campus community of the incident and to provide information that may enable community members to protect themselves from similar incidents. Georgia Tech will issue Clery Act Safety Alerts whenever the following criteria are met: 1) a crime is committed; 2) the perpetrator has not been apprehended; and 3) there is a substantial risk to the physical safety of other members of the campus community because of the crime. Such crimes include, but are not limited to: 1) Clery Act crimes that are reported to any Campus Security Authority or the local police; or 2) crimes in which the Institute determines that the incident represents an ongoing threat to the campus community. If a robbery suspect has already been detained, the crime is not considered a threat to the community and no warning is sent. When issuing Clery Act Safety Alerts under the Clery Act, Georgia Tech withholds as confidential the names of victims. Clery Act Safety Alerts shall be decided on a case-by-case basis in light of all the facts surrounding the crime. Additionally, GTPD may, in some circumstances, issue Clery Act Safety Alerts when there is a pattern of crimes against persons or property.

GT-Shenzhen Student Affairs Coordinator, Ms. Yuan Zhang is the first point of contact for students and faculty encountering any emergency. Her cell phone number is +86 184-7559-8953; his email address is yuanzhang@gtsi.edu.cn. She has the cell phone number of each program participant and is connected with all students on the social media platform WeChat. In case of emergency, she will notify everyone by text to the cell phone, a message on WeChat, followed by an email to the group.

In case of any security issues in the area, the police will alert the property management company which alerts the GT-Shenzhen Student Affairs Coordinator Ms. Zhang, who will in turn alert all program participants as described above.

Emergency Response and Evacuation Procedures

In case the buildings need to be evacuated, the meeting point for the group is the court just outside of the buildings.

The decision to implement wide evacuation procedures generally rests with Ms. Yuan Zhang. In situations requiring immediate action, public safety responders (police, fire, environmental health and safety) can also order an evacuation. When evaluating the possible evacuation, consideration will be given to the specific threat, its context, and the recommendation of the public safety officials. This decision must comply with the emergency notification requirements of the Jeanne Clery Disclosure of Campus Security Policy and Campus Crime Statistics Act, as amended by the Higher Education Opportunity Act of 2008 and applicable Department of Education regulations.

In situations where there is an imminent threat that requires the community to take immediate action, Ms. Yuan Zhang and the Director of GT-Shenzhen may initiate emergency notification based upon their initial assessment. This may entail notifying the local safety units (police, fire, environmental health and safety), an on scene size-up, reports from responding staff, video evidence, and/ multiple calls and reports from the public. The following persons may authorize use of emergency notification:

- Georgia Tech-Shenzhen Director
- Georgia Tech-Shenzhen Student Affairs Coordinator

Safety Abroad

Upon faculty and students' arrival in GT-Shenzhen, they receive detailed information about local resources, safety advice, Georgia Tech-Shenzhen policies, and emergency evacuation procedures.

Personal Safety Tips from the GTPD

Although the victim is never at fault, prioritizing one's personal safety is a good idea. By taking a few simple precautions as you go about your daily activities, you can reduce your chances of becoming a crime victim.

GT-Shenzhen operates a lost and found. Stop by GT-Shenzhen to drop off found property or inquire about lost property.

Basic Rules

- Be aware of your surroundings; stay alert and do not get distracted.
- During winter season, please take awareness of the extremely low temperatures and strong windy days. When you go outside, please pay attention to the falling objects. Do not skating in the rivers or lakes which are full of safety uncertainty.
- Know where the police station is and which buildings are open late.
- Know where emergency telephones are located.
- Choose well-lit, busy streets and areas, and walk with a friend.
- Use body language to communicate that you are calm, confident, and know where you are going.
- Make eye contact with those around you and walk tall.
- Trust your instincts. Leave if you feel uncomfortable in a setting.
- To escape danger, cross the street, move to a well-lit area, and quickly go to the nearest house or open facility.
- Never prop open exterior doors to residence halls or other buildings.
- Keep room doors locked at all times.
- Carry your keys at all times.

Publicizing Personal Information

- Be careful about publicizing personal information — your name, picture, hobbies, and other identifiable details — on websites and other easily accessible sources.
- Be aware that personal information posted on social media may open the door for this information to be used by individuals to commit identity theft or other predatory crimes.

When Walking

- Walk facing traffic.
- Carry a minimal number of belongings.
- Keep emergency money for transportation on in a separate location.
- Have your keys in your hand when approaching your vehicle or residence.
- If you feel you are being followed by someone in a vehicle, change your direction and write down the license plate number.

Jogging, Bicycling, and Other Outdoor Activities

- Choose safe, well-populated routes.
- Vary your routine, including the times you perform certain activities and the routes you take to or from such activities.
- Wear light, brightly colored clothing, especially at dusk and at night.
- Avoid jogging, biking, and other outdoor activities alone at night.
- If possible, carry a personal safety alarm.
- Do not wear headphones that cancel other sounds.

What If It Happens to You?

- Do not resist if the attacker is only after your purse or other valuables.
- Remain calm and do not show signs of panic, anger, or confusion.
- Call the police immediately or the emergency contact. Identify yourself and your location.
- Try to get a good description of your attacker, focusing on attributes such as:
 - Age – Sex – Scars – Race – Height – Tattoos – Weight – Complexion – Type of Clothing – Body Build

For Your Room and Apartment When You're Away

- Be sure all of your windows and doors are locked before you leave.
- Turn off or unplug unnecessary appliances before you leave.
- Valuables should not be visible through the windows and doors.
- When possible, take valuables with you, or lock them up.
- Ask a trusted neighbor to watch your apartment.

While You're Out or Shopping

- Stay alert and be aware of everything around you. Take a minute to observe who may be watching you. Criminals often target people who are distracted.
- Don't use short cuts through alleys or walkways; stay in well-lit and well-traveled areas.
- When possible shop with friends or relatives - there is safety in numbers.
- As you shop, be alert in crowded places. Among pickpockets' favorites are jammed aisles, elevators, and public transportation stops, especially at rush hour.
- If you must take a wallet or purse, carry it close to your body with the clasp nearest you and be alert. They are prime targets of criminals in crowded shopping areas, transportation terminals, bus stops, on buses and other rapid transit. Never leave your wallet or purse unattended in a shopping cart or on a counter.
- Avoid carrying large amounts of cash.
- Make a list of all your credit/debit cards and their numbers and keep this list at home. This will assist you and the police if they are stolen. Notify the credit card issuer immediately if your credit card is lost, stolen or misused.
- Be alert for suspicious persons loitering in parking lots.
- Beware of strangers approaching you for any reason. "Con-artists" may try various methods of distracting you with the intention of taking your money or belongings.
- If you feel unsafe, ask mall or store security for an escort before leaving your shopping location.

Before Travelling

- Do some research about your intended destination and find out about any risks or potentially dangerous areas to avoid.
- Make sure your parents or friends have the cell phone numbers and full names of your traveling companions in case you lose your phone or some other problem arises that would make it difficult to contact you.
- Let your parents know your planned travel route, any planned stops, diversions, etc., and the physical address and the phone number of your intended destination.
- Be sure to lock your room and apartment and make sure your valuables are completely secure. Unplug unnecessary appliances and equipment that might increase risk of a fire.
- While traveling, always wear your seatbelt, obey the speed limits and be prepared to adjust your speed if weather conditions require it.
- Get sufficient rest before traveling and always drive safely and defensively.
- Don't drink and drive.

Property Safety Tips

The following are some of the most frequent targets of theft and some security tips to help you protect your property. Students should contact a GT-Shenzhen staff member in the event that personal property is stolen.

At the ATM

- If you must use an ATM, choose one that is located inside a bank, mall, or well-lighted location. Withdraw only the amount of cash you need.
- Stay alert and be aware of your surroundings when you use an ATM.
- If you notice anything unusual, cancel your transaction, pocket your card and leave immediately. Go to a safe place and call police.
- Have everything ready (deposit slips, card) when you arrive at the ATM. When you have completed your transaction, pocket your cash and card immediately.
- Protect your password or PIN by shielding the ATM keypad from anyone who is standing near you.
- Do not throw your ATM receipt away at the ATM location.
- Treat your ATM card like cash and guard it carefully. Never write your pin number on the card or give account numbers or card information over the phone, unless you know exactly to whom you are speaking.

Fraud Prevention

- Refuse any form of marketing and protect your personal information.
- Take care of your personal documents, and do not let others use them on your behalf.
- Always carry a photocopy of your important documentation (e.g. passports).
- Pay attention to any kinds of tele-fraud.
- Keep your password safe.

Bicycles

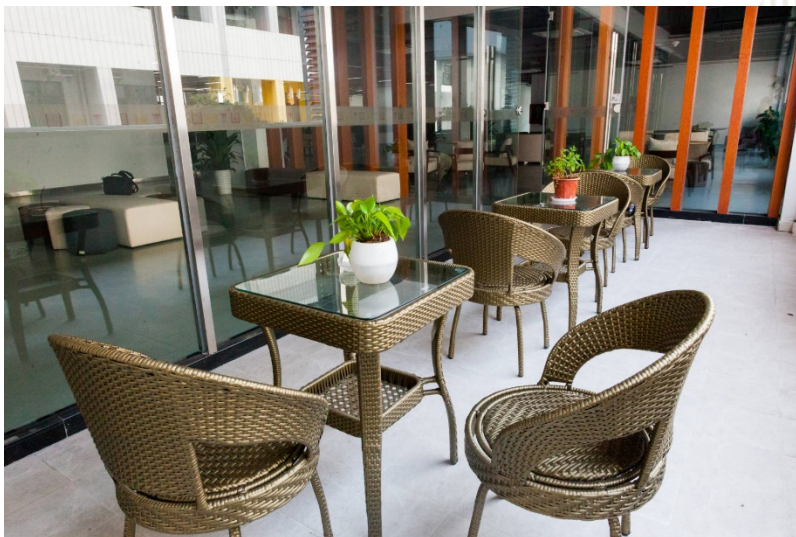
- Park your bicycle in areas with a high volume of pedestrian traffic.
- Lock your bicycle with a high quality U-shaped lock.

Computers and Other Office Equipment

- Lock your room every time you leave.
- Keep records of your equipment that include a description of the equipment along with the make, model, and serial number.
- Engrave or apply an owner or departmental identification marking
- Secure computers with cable locks or other security devices.
- Consider purchasing and installing a tracking device on your laptop.

Textbooks and Thefts

- Write your name or owner identification number on several pages inside your books.
- Never leave your book bag or books unattended.
- While lockers are safe for storing clothes, they can be broken into. Do not store valuable items in a locker without using a lock.



Reporting Crime & Suspicious Behavior

All members of the Georgia Tech community, including all students, faculty, staff, and guests, are encouraged to report all crimes and other public safety concerns in a timely manner. To report a crime in progress or a situation presenting immediate danger, students, faculty and staff are encouraged to report all crimes and public safety incidents or concerns by reaching out to the closest staff member from the list below or calling the local police.

These crimes, as defined by the Jeanne Clery Disclosure of Campus Security Policy and Campus Crime Statistics Act (Clery Act), include: murder, non-negligent manslaughter, negligent manslaughter, rape, fondling, incest, statutory rape, robbery, aggravated assault, burglary, motor vehicle theft, arson (limited to investigated cases determined by law enforcement authorities to be arson), domestic violence, dating violence, and stalking. Hate crimes need to be reported as well. Hate crimes include any of the above offenses and incidents of larceny-theft, simple assault, intimidation or destruction/damage/vandalism of property which were motivated by the offender's bias. Bias categories include disability, ethnicity, gender, gender identity, national origin, race, religion, and sexual orientation.

To report non-emergency crimes representing no immediate danger, students and/or faculty members are asked to report any concern to the Student Affairs Coordinator Ms. Yuan Zhang or staff members in charge of disciplinary issues and student conduct.

All members of the Georgia Tech community, including students, faculty, staff, and guests, may report specific crimes to any Campus Security Authority (CSA). The Clery Act defines CSA as (1) a member of a campus police department, (2) an individual with responsibility for campus security who is not a part of a police or security department, (3) anyone designated in an institution's campus security policy as a recipient of reports of criminal offenses from students or employees, and (4) an official of the institution having significant responsibility for student and campus activities.

With Georgia Tech-Shenzhen, the following positions meet the definition of a CSA.

- Georgia Tech-Shenzhen Student Affairs Coordinator
- Georgia Tech-Shenzhen Program Director

CSAs are responsible for reporting allegations of Clery Act crimes that are reported to them in a timely manner. The person making the report must be asked if he or she consents to be identified. CSA crime reports should include enough detail to properly identify the crime, location of the incident, date and time it occurred, and personally identifying information when available. All CSAs will follow the proper procedure to take action by calling local authorities and/or the Division of Student Life in Atlanta, as well as the emergency contact at OIE and the Graduate Program Director in Atlanta.

Important Telephone Numbers

Students and faculty receive a wallet-size card with phone numbers of the Georgia Tech-Shenzhen emergency contacts. For immediate assistance, they will thus be able to call the Emergency Response Phone numbers: 110 for police, 119 for fire, and 120 for first-aid ambulance.

Police	110
Fire	119
First-aid Ambulance	120

Missing Persons

Missing Student Policy

If there is reason to believe that a student with GT-Shenzhen is missing (i.e., when their whereabouts are unknown and unexplainable for a period of time regarded as highly unusual or suspicious in consideration of the person's usual behavior patterns, routines, or plans), the person who realizes that the student is missing must contact the GT-Shenzhen Student Affairs Coordinator Ms. Yuan Zhang. A procedure will immediately be started to identify the whereabouts of the student. If deemed necessary, Ms. Zhang will go in person to the student's dorm and, if necessary, will contact the other students of the group via WeChat to request their help in locating the missing student. Should a student remain missing, the Program Director will be informed.

There is no waiting period to report a missing person to Ms. Yuan Zhang. Upon notification that a person is or may be missing, Ms. Yuan Zhang will give full consideration and attention to the report, including careful recording of factual circumstances surrounding the disappearance and identifying those cases when an individual may be in jeopardy. She will exercise particular care in instances involving individuals who may be mentally or physically impaired, missing or unidentified children, and others who are insufficiently prepared to take care of themselves. If it is determined that a student is, in fact, missing, Ms. Zhang will, as soon as possible and practical, notify the appropriate administrators and additional law enforcement agencies as appropriate.

Students participating in the Georgia Tech-Shenzhen programs are encouraged to travel in groups over the weekend and to submit information about planned trips.

All contact information collected for the purpose of locating missing students shall remain confidential, will be used only for the purpose specified herein, and will not be disclosed outside of the realm of a missing student investigation.

Institute Policy Statements

Georgia Tech-Shenzhen follows Georgia Tech policies for student conduct, disciplinary processes, prevention and response to sexual assault, dating or domestic violence, and stalking, as outlined in the main Georgia Tech Annual Safety and Security Report, and in the institute policy library:

- Non-Academic Misconduct: <http://www.policylibrary.gatech.edu/student-life/student-code-conduct>
- Sexual Misconduct: <http://www.policylibrary.gatech.edu/student-life/sexual-misconduct>
- Equal Opportunity, Nondiscrimination, and Anti-Harassment Policy: <https://titleix.gatech.edu/equal-opportunity-nondiscrimination-and-anti-harassment-policy>
- Student Alcohol Policy: <http://www.policylibrary.gatech.edu/student-affairs/studentstudent-organization-alcohol-policy>
- Employee Alcohol and Illegal Drug Use: <http://www.policylibrary.gatech.edu/employment/employee-alcohol-and-illegal-drug-use>

Alcohol & Drug Policies, Education, & Assistance

Alcoholic Beverages

Any use of alcoholic beverages must be in compliance with the GT-Shenzhen policy. Students of legal drinking age may possess and consume alcoholic beverages only in their private residences. Alcohol may not be consumed in common areas or in the GT-Shenzhen academic facilities.

Georgia Tech has established policies and procedures governing the possession, sale, and consumption of alcoholic beverages on campus:

- The Student Alcohol Policy may be obtained through the Office of Student Integrity or through the Georgia Tech Policy Library at: <http://policies.gatech.edu/studentstudent-organization-alcohol-policy>
- The Employee Alcohol and Illegal Drug Use Policy may be obtained from Georgia Tech Human Resources or through the Georgia Tech Policy Library at: <http://policies.gatech.edu/employee-alcohol-and-illegal-drug-use>
- The Campus Alcohol Policy can be found on the Georgia Tech Policy Library website at: <http://policies.gatech.edu/campus-use-facilities/campus-alcohol-policy>

- The Good Samaritan/Medical Amnesty Provision can be found at:
http://osi.gatech.edu/sites/default/files/images/good_samaritan-medical_amnesty_provision1.pdf

At any campus function for students where alcohol is served, campus officials must give approval and certain provisions must be made. Each person is legally responsible for his or her actions in all mental and physical conditions, including those induced by alcoholic beverages.

Illegal Drugs

In accordance with Georgia Tech policies, Georgia Tech-Shenzhen prohibits the possession or use, without a valid prescription, of any substance currently classified as a dangerous drug by the Georgia Controlled Substance Act. Any individual breaking the law will be subject to disciplinary action and arrest.

Substance Abuse Education

Georgia Tech-Shenzhen is committed to maintaining a campus free of drug and alcohol abuse and assisting all employees and students in finding ways to address such problems. Educational programs addressing these issues are supported and encouraged through a variety of departments on the Georgia Tech main campus. Anyone aware of substance abuse problems with roommates, friends, or coworkers is encouraged to contact the GT-Shenzhen staff member for help.

Substance Abuse Assistance

For students with substance abuse problems, assistance is available through the Georgia Tech Counseling Center, office of Health Initiatives and Stamps Health Services.

The Counseling Center has experienced professional counselors and psychologists to assist students in need, a Recovery Program. Students are scheduled for individual appointments, and all information is kept strictly confidential. Health Initiatives has health educators who are able to provide information and referrals for programs as well.

Counseling Center 404-894-2575
Health Initiatives.....404-894-9980
Stamps Health Services..... 404.894.1420

Georgia Tech faculty and staff may obtain assistance through the Office of Human Resources Employee Assistance Program (EAP) at 678-616-TECH (8324). Counseling and referral services are provided by appointment, and all information is kept strictly confidential. The EAP also offers training and educational programs regarding drug and alcohol awareness.

Applicable Local Laws

Students are expected to abide by local laws. It is the responsibility of students to assume the risks associated with alcohol/drug use and abuse.

Sexual Assault, Dating or Domestic Violence, Stalking Prevention and Response

Georgia Tech-Shenzhen is actively engaged in preventing and responding to sexual assault, dating or domestic violence, and stalking. These crimes are not tolerated at Georgia Tech-Shenzhen and are a violation of the Sexual Misconduct Policy; the Equal Opportunity, Nondiscrimination, and Anti-Harassment Policy; and Georgia law.

VOICE, Georgia Tech's sexual and relationship violence prevention and victim-survivor support initiative, is founded on the premise that everyone has the right to live and learn at Georgia Tech, free of violence or the threat of violence. This initiative seeks to create a campus culture that promotes respect, communication, and equity among the Georgia Tech community. VOICE is led by staff in Health Initiatives and involves students, faculty, and staff from units across the campus, including GTPD, the Women's Resource Center, Stamps Health Services, the Department of Housing and Residence Life, Fraternity and Sorority Life, the Counseling Center, the Division of Student Life, Office of the General Counsel, the student Government Association, the Athletic Association, and others. More information can be found at <https://healthinitiatives.gatech.edu/well-being/voice>.

Consent: Words or actions that show a knowing and voluntary willingness to engage in mutually agreed-upon sexual activity. Consent cannot be gained by force, intimidation, or coercion; by ignoring or acting in spite of objections of another; or by taking advantage of the incapacitation of another where the respondent knows or reasonably should have known of such incapacitation. Minors under the age of 16 cannot legally consent under Georgia law.

Consent is also absent when the activity in question exceeds the scope of consent previously given. Past consent does not imply present or future consent. Silence or an absence of resistance does not imply consent.

Consent can be withdrawn at any time by a party by using clear words or actions.

Incapacitation: The physical and/or mental inability to make informed, rational judgments. It can result from mental disability, sleep or any state of unconsciousness, involuntary physical restraint, status as a minor under the age of 16, or from intentional or unintentional consumption of alcohol and/or other drugs. Whether someone is incapacitated is to be judged from the perspective of an objectively reasonable person.

Dating Violence: Violence committed by a person who is or has been in a social relationship of a romantic or intimate nature with the alleged victim. The existence of such relationship shall be determined based on the totality of the circumstances including, without limitation to: (1) the length of the relationship; (2) the type of relationship; and (3) the frequency of interaction between the persons involved in the relationship.

Dating violence includes, but is not limited to, sexual or physical abuse or the threat of such abuse. Dating violence does not include acts covered under the definition of Domestic Violence.

Domestic Violence: Violence committed by a current or former spouse or intimate partner of the alleged victim; by a person with whom the alleged victim shares a child in common; by a person who is cohabitating with, or has cohabitated with, the victim as a spouse or intimate partner; or by a person similarly situated to a spouse of the alleged victim.

Nonconsensual Sexual Contact: Any physical contact with another person of a sexual nature without the person's consent. It includes but is not limited to the touching of a person's intimate parts (for example, genitalia, groin, breasts, or buttocks), touching a person with one's own intimate parts; or forcing a person to touch his or her own or another person's intimate parts. This provision also includes "Fondling" as defined by the Clery Act.

Nonconsensual Sexual Penetration: Any penetration of the vagina, anus, or mouth by a penis, object, tongue, finger, or other body part; or contact between the mouth of one person and the genitals or anus of another person. This provision includes "Rape, Incest, and Statutory Rape," as defined by the Clery Act.

Reasonable Person: An individual who is objectively reasonable under similar circumstances and with similar identities to the person being evaluated by the institution.

Sexual Exploitation: Taking non-consensual or abusive sexual advantage of another for one's own advantage or benefit, or for the benefit or advantage of anyone other than the one being exploited.

Examples of sexual exploitation may include, but are not limited to, the following:

- Invasion of sexual privacy;
- Prostituting another individual;
- Nonconsensual photos, video, or audio of sexual activity;
- Nonconsensual distribution of photo, video, or audio of sexual activity, even if the sexual activity was consensual;
- Intentional observation of nonconsenting individuals who are partially undressed, naked, or engaged in sexual acts;

- Knowingly transmitting an STD or HIV to another individual through sexual activity;
- Intentionally and inappropriately exposing one's breasts, buttocks, groin, or genitals in nonconsensual circumstances; and/or
- Sexually-based bullying

Sexual Harassment (Student on Student): Unwelcome verbal, nonverbal, or physical conduct based on sex (including gender stereotypes), determined by a Reasonable Person to be so severe, pervasive, and objectively offensive that it effectively denies a person equal access to participate in or to benefit from an institutional education program or activity.

Sexual Harassment (Other Than Student on Student): Unwelcome verbal, nonverbal, or physical conduct, based on sex (including gender stereotypes), that may be any of the following:

- Implicitly or explicitly a term or condition of employment or status in a course, program, or activity;
- A basis for employment or educational decisions; or
- Is sufficiently severe, persistent, or pervasive to interfere with one's work or educational performance creating an intimidating, hostile, or offensive work or learning environment, or interfering with or limiting one's ability to participate in or to benefit from an institutional program or activity.

Sexual Misconduct: Includes, but is not limited to, such unwanted behavior as dating violence, domestic violence, nonconsensual sexual contact, sexual exploitation, sexual harassment, and stalking.

Stalking: Engaging in a course of conduct directed at a specific person that would cause a reasonable person to fear for their safety or the safety of others or suffer substantial emotional distress. For the purposes of this definition: (1) Course of conduct means two or more acts, including, but not limited to, acts in which the stalker directly, indirectly, or through third parties, by any action, method, device, or means, follows, monitors, observes, surveils, threatens, or communicates to or about a person, or interferes with a person's property; and (2) Substantial emotional distress means significant mental suffering or anguish that may, but does not necessarily, require medical or other professional treatment or counseling.

Bystander Intervention

Intervening can be difficult, but every person on campus, whether a student, staff, or faculty member, has a role in preventing or responding to violence before, during, or after it happens.

- Sexual violence occurs when a culture tolerates these behaviors, and it starts with rape jokes or sexist language. If you hear it, remember that you don't have to laugh or participate.
- If you witness a potentially sexually violent situation, step in. Intervening can be direct or indirect – the important thing is that you do something. If you don't feel comfortable addressing the potential perpetrator directly, consider causing a distraction or getting someone else to help you. Even if you don't know the people involved, you can still help. If it is happening to a member of the Georgia Tech community, it's your business.
- Being an active bystander might mean helping after an assault occurs. Learn more about options available to survivors, and offer help and support if someone you know experiences any form of sexual violence. Believe the survivor and be supportive of their choices.

What Consent Means

"Policies and Definitions Regarding Sexual Assault, Dating or Domestic Violence, and Stalking," for the definition of consent. Below, you can find additional information to help you understand what consent means.

Consent begins when individuals decide together to do the same thing, at the same time, in the same way, with each other. It is the responsibility of the initiator, or the person who wants to engage in the specific sexual activity, to make sure they have consent from their partner(s).

- Consent to one form of sexual activity does not imply consent to any other form of sexual activity.
- The initiator must obtain consent at every stage of sexual interaction.
- Consent may never be given by incapacitated persons. Incapacitation refers to the physical and/ or mental inability to make informed, rational judgments. It can result from mental disability, sleep or any state of unconsciousness, involuntary physical restraint, status as a minor under the age of 16, or from intentional or unintentional taking of alcohol and/or other drugs. Whether someone is incapacitated is to be judged from the perspective of an objectively reasonable person.

Primary Prevention Programs and Awareness Campaigns

The VOICE initiative takes a comprehensive approach to sexual violence prevention and awareness programming on the Georgia Tech campus. Yearly programming includes a VOICE training series, awareness events and campaigns, guest speakers, classroom and student organization presentations, and workshops for staff and faculty. All new students

will receive mandatory training on the identification and prevention of sexual misconduct, including sexual assault, stalking, sexual harassment, and dating violence.

Students

VOICE's sexual violence prevention programs contain definitions of consent, sexual assault, dating/domestic violence, and stalking; as well as information on the Georgia Tech Student Sexual Misconduct Policy; safe and positive options for bystander intervention; sexual violence prevention strategies; and ways to support a survivor. VOICE serves thousands of students each year with trainings, speakers, and awareness campaigns. As part of its comprehensive health programming, Georgia Tech requires first-year undergraduate and incoming transfer students to complete *AlcoholEdu* and *Sexual Assault Prevention for Undergraduates* as part of comprehensive health programming; all first-year graduate students are expected to complete the online *Sexual Assault Prevention for Graduate Students* course. Students can visit www.voice.gatech.edu to learn more about Georgia Tech's sexual violence prevention and response activities, or email voice@gatech.edu for more information.

Faculty and Staff

Pursuant to its Policy of Non-Discrimination and Affirmative Action, Anti-Harassment Policy, and Sexual Misconduct Policy, Georgia Tech prohibits its faculty and staff members from engaging in discriminatory conduct on the basis of gender, including sexual harassment and sexual misconduct. The University System of Georgia (USG)'s Sexual Misconduct Policy applies to all members of the USG community, including Georgia Tech. Georgia Tech's sexual misconduct policy adopts and incorporates the USG policy. Among other things, the policies contain definitions of consent, nonconsensual sexual contact, dating violence, domestic violence and stalking.

The USG policy is located at:

<https://www.usg.edu/policymanual/section6/C2655>

Georgia Tech's policy is located at:

<http://policylibrary.gatech.edu/student-life/student-sexual-misconduct>

Faculty and staff who would like to learn more about resources for sexual assault, dating or domestic violence, sexual harassment and stalking can visit www.voice.gatech.edu or titleix.gatech.edu. Also, contact VOICE by email at voice@gatech.edu for information on upcoming events and training opportunities. VOICE trainings are available upon request for professional staff, student staff, academic classes, and organizations. VOICE's sexual violence prevention programs contain: definitions of consent, sexual harassment, sexual assault, dating/domestic violence, and stalking; myths related to sexual violence on campus; information on the Georgia Tech Sexual Misconduct Policy; safe and positive options for bystander intervention; sexual violence prevention strategies; and ways to support a

survivor. Faculty and staff are also welcome to serve on the Sexual Violence Prevention Alliance, a multidisciplinary committee that meets monthly to address campus programming and communication related to sexual violence prevention and response.

Crisis Response Services Available

The Georgia Tech community has a wide range of services available to support and help survivors of sexual assault, dating or domestic violence, sexual harassment and stalking. Regardless of where an offense occurred, if a Georgia Tech student or employee reports being a victim-survivor of sexual assault, dating or domestic violence, sexual harassment, or stalking, the victim is provided with a written explanation of her or his rights and options.

In addition to receiving immediate assistance from Ms. Yuan Zhang by calling her phone number, students at Georgia Tech-Shenzhen are advised to call the police (110).

Options for Seeking Medical Attention

After a sexual assault, seeking medical attention within the first five days is important for medical reasons, as well as for collecting evidence for a law enforcement investigation. The First-aid Ambulance can be reached by calling 120.

Georgia Tech-Shenzhen advises the faculty and students to use the following local hospital with English-speaking doctors. Additionally, a staff member of Georgia Tech-Shenzhen will accompany the faculty or the student to the hospital, if the incident happened locally.

Hospital in Shenzhen:

Shenzhen University General Hospital
1098 Xueyuan Avenue, Xili University Town
Nanshan District, Shenzhen, 518055, CHINA
深圳大学总医院, 深圳市西丽大学城学苑大道 1098 号

Route: About 15 minutes walking distance from GT-Shenzhen campus.

Contacts: 0755-21839999

Website: <http://sugh.szu.edu.cn/>

Appointment Hotline: 0755-21839888

Online Booking:

- By WeChat: To search WeChat office account of Shenzhen University General Hospital
- Mobile app: Health 160

Walk-in Appointment:

- Self-service machine, toll booth and reception desk on 1F of Outpatient Building

Counseling Services

In addition to the support provided by the VOICE Advocates, the Georgia Tech Center for Assessment, Referral, and Education (CARE) as well as the Counseling Center provide mental health support and other services and are committed to assisting students who have experienced sexual violence of any form, including sexual assault, dating or domestic violence, sexual harassment, and stalking. Eligible students with Georgia Tech-Shenzhen have the option of using the confidential services at the Georgia Tech Counseling. An English-speaking therapist approved by Cultural Insurance Services International (CISI) is also available for therapeutic services via Skype.

The Georgia Tech Counseling Center free confidential counseling services for Georgia Tech students who have been victims of sexual violence. You do not have to file a police report for counseling assistance. Aftercare in the form of counseling, advocacy, and follow-up is also available from national hotlines such as RAINN (Rape, Abuse, and Incest National Network) or the National Domestic Violence Hotline.

Advocate Services

VOICE Advocates in Health Initiatives are available 24 hours a day to support students. Advocates can assist victims of any gender in identifying resources to cope with the aftermath of sexual violence. An on-call advocate is available for support 24/7. For business hours (Monday – Friday, 8 a.m. – 5 p.m.), call 404.385.4451 or 404.385.4464. Nights, weekends, and holidays. It can be reached after hours through GTPD (404-894-2500). You do not need to provide any information other than a phone number.



GT-Shenzhen Resources

For Students

Voice – 404-385-4464

The Office of Health Initiatives has two full-time VOICE Advocates on staff who can provide confidential, immediate, and ongoing support to a victim-survivor coping with an experience of sexual violence. Support includes information about reporting options, regardless of when or where the violence occurred, facilitation of accommodations, and connecting victim-survivors with resources if they are struggling with classes, relationships, or other effects of their experience. In addition, VOICE provides information, educational programs, referrals, and support for sexual assault, rape, dating or domestic violence, sexual harassment, stalking, and related issues.

Georgia Tech Police Department (GTPD) – 404-894-2500

GTPD officers are trained to help ensure the well-being of victims, provide transportation to Grady Hospital for treatment, and support the investigation and prosecution of cases. Several members of GTPD are involved with the Sexual Violence Prevention Alliance on campus.

Office of the AVP for Student Engagement and Well-Being and Dean of Students – 404-894-2565

The Office of the AVP for Student Engagement and Well-Being and Dean of Students can serve as an advocate for students in reporting incidents of sexual violence and provide resources and referrals for victims. It also enforces Institute judicial actions in response to sexual violence through the Office of Student Integrity.

Women's Resource Center (WRC) – 404-385-0230

Confidential staff in the Women's Resource Center, a unit in the Division of Student Life, work to connect victim-survivors with Advocates in Health Initiatives, as well as provide additional resources for those who may be struggling with classes, relationships, or other significant matters that may have resulted from their experience.

Women's Health – 404-894-1434

Women's Health at Stamps Health Services has staff who provide services for sexual and reproductive health needs. Women's Health offers pelvic exams and pap smears, contraception, including emergency contraception, and STI screening. They do not, however, collect rape kits.

Georgia Tech Counseling Center – 404-894-2575

The Georgia Tech Counseling Center offers free confidential counseling services for Georgia Tech students who have been victims of sexual violence, as well as other types of counseling services.

Title IX Coordinator – 404-385-5583

Georgia Tech's Title IX Coordinator serves as a resource for gender equity on campus and helps shape campus policy and compliance regarding gender-based conduct. The Title IX Coordinator is supported

by campus leaders who assist in the identification of initiatives and assessments. Any grievances or alleged violations of Title IX should be reported immediately. (www.titleix.gatech.edu)

LGBTQIA Resource Center – 404-385-2679

The Center coordinates a range of programs and events throughout the year aimed at educating faculty, students, and staff about LGBTQIA issues, providing safe spaces for LGBTQIA students to build community and explore their identities, and facilitating conversations about LGBTQIA diversity, equity, and inclusion. Confidential individual support is available throughout the year for students, faculty, and staff who want to discuss needs and concerns.

Resources for Faculty and Staff

Employee Assistance Program (EAP) – 1-844-243-4440

Georgia Tech has contracted with Kepro to provide employees and their family members with a comprehensive Employee Assistance Program (EAP), a confidential counseling service that assists employees in addressing emotional and mental health concerns. EAP is staffed by counselors who are providers of mental health services licensed in Georgia. <https://health-and-wellbeing.gatech.edu/eap>.

Georgia Tech Police Department (GTPD) – 404-894-2500

GTPD officers can support the investigation and prosecution of cases, help ensure the well-being of victims, and transport them to Grady Hospital for treatment. Several members of GTPD are involved with the Sexual Violence Prevention Alliance on campus.

Title IX Coordinator – 404-385-5583

Georgia Tech's Title IX Coordinator serves as a resource for gender equity on campus and helps shape campus policy and compliance regarding gender-based conduct. The Title IX Coordinator is supported by campus leaders who assist in the identification of initiatives and assessments. Any grievances or alleged violations of Title IX should be reported immediately. (www.titleix.gatech.edu)

LGBTQIA Resource Center – 404-385-2679

The Center coordinates a range of programs and events throughout the year aimed at educating faculty, students, and staff about LGBTQIA issues, providing safe spaces for LGBTQIA students to build community and explore their identities, and facilitating conversations about LGBTQIA diversity, equity, and inclusion. Confidential individual support is available throughout the year for students, faculty, and staff who want to discuss needs and concerns.

Reporting Options for Sexual Violence

For Georgia Tech students, faculty, and staff who experience sexual violence, including sexual assault, dating or domestic violence, stalking, or sexual harassment, there are several basic reporting options, depending on whether the victim wishes to file a confidential or anonymous report, pursue an Institute investigation, or seek a criminal investigation with the assistance of the GT-Shenzhen staff and the GTPD. Reporting options are described in the

University System of Georgia (USG)'s sexual misconduct policy, on which Georgia Tech's sexual misconduct policy is based. Links to Georgia Tech's policy can be found at: <http://policylibrary.gatech.edu/student-life/student-sexual-misconduct>.

Additional information can also be found at: <http://titleix.gatech.edu>.

When a report is received through one of these methods, the victim receives written notice of their rights and options, including, where appropriate, information about orders of protection, no-contact orders, and restraining orders. A victim also has the right to choose not to file any report. In that case, a student victim can still receive support services from VOICE in Health Initiatives, or CARE, and a faculty or staff member can still receive support services from the Employee Assistance Program. A listing of the resources available to victim-survivors may be found at:

<http://titleix.gatech.edu/content/title-ix-resources> and:
<http://healthinitiatives.gatech.edu/resources>

To File a Confidential Report

Student victims may file a confidential report with a VOICE Advocate in Health Initiatives, who can help a student navigate their options for any other report that they would like to make. For incidents covered by the Clery Act, VOICE Advocates share general information without identifying any parties involved for campus safety statistics.

In addition to VOICE in Health Initiatives, confidential resources also include the Center for Assessment, Referral, and the Education (CARE); Counselling center, the Women's Resource Center, LGBTQIA Resource Center, and Stamps Health Services. Confidential resources who are also Campus Security Authorities (CSA) will collect general information for campus safety statistics, but will not refer the case to the Title IX Coordinator.

By contrast, CSAs who are not confidential resources and are, instead, "Responsible Employees" under Georgia Tech's Sexual Misconduct Policy will refer the case to the Title IX Coordinator for follow-up, in addition to collecting information for campus safety statistics. If someone reports an incident to a Responsible Employee on campus, the report cannot remain confidential. The Responsible Employee is obligated to inform the Title IX Coordinator. If identifying information is provided, the Title IX Coordinator will endeavor to use that information to investigate the matter. Examples of identifying information include, but are not limited to, name, email address, apartment or room number, job title (e.g., TA for a particular class), specific description.

Faculty and staff who experience or wish to report concerns of sexual violence may file a confidential report through EthicsPoint (a neutral third-party host) by completing an online form at <https://secure.ethicspoint.com/domain/media/en/gui/7508/index.html> or by calling

1.866.297.0224 and having EthicsPoint transcribe the information and send it to the Institute. General information is collected for campus safety statistics, and the case is referred for investigation – to the extent possible given the information provided.

To Pursue an Title IX/Institute Investigation - Students

If the accused individual is a student, the victim may report the violation in writing or in person to the Title IX Coordinator to begin the investigation.

To prepare for the official conduct process, students may wish to meet with a VOICE advocate in Health Initiatives prior to making the official report. The Advocate will share information with a student about their rights, explain the reporting and investigation process, and share additional resources. Visit www.voice.gatech.edu for contact information for VOICE Advocates. Victims are encouraged to report as soon as possible, and the Title IX Coordinator will review all complaints.

Although the goal is to limit the number of individuals who may learn about an allegation or investigation of misconduct, Georgia Tech cannot guarantee confidentiality once a complaint has been made.

To pursue an Office of Human Resources investigation – Faculty or Staff

If the accused individual is a faculty or staff member, the victim may file a report with the Title IX Coordinator or a Deputy Title IX Coordinator.

They may also file a report through EthicsPoint (a neutral third-party host) by completing an online form at www.ethicspoint.com or by calling 1.866.294.5565 and having EthicsPoint transcribe the information and send it to the Institute. General information is collected for campus safety statistics, and the case is referred to the Institute's Title IX Coordinator for investigation through that office or through GTHR—to the extent possible given the information provided.

To pursue a criminal investigation

All victims may file a report with the GTPD or local police for a criminal investigation, which may be sought in conjunction with an Institute investigation. Georgia Tech will honor all protection and no-contact orders issued by a criminal court as directed by law.

Reports to the GTPD will be shared with the Division of Student Life and the Title IX coordinator and will be investigated for violation of policy or other violations of the Sexual Misconduct Policy.

A VOICE advocate can assist students with reporting to the GTPD or local police. Visit www.voice.gatech.edu for contact information for the advocates.

Sexual Misconduct Disciplinary Procedures

Students

All investigations concerning sexual violence by a Georgia Tech student will be prompt, fair, and impartial. The standard of proof utilized in these cases is preponderance of the evidence. Preponderance of the evidence, as an evidentiary standard, means that it is more likely than not the alleged violation of policy occurred. All Title IX investigation, resolution, and appeal processes involving accused students are carried out by those who have received annual training on conducting sexual misconduct investigations and/or participating in the hearing and resolution processes.

Under Georgia Tech's Sexual Misconduct Policy (policylibrary.gatech.edu/student-life/sexual-misconduct), complaints of sexual misconduct are investigated and resolved as provided in Board of Regents Policy 6.7 (Sexual Misconduct Policy) and Policy 4.6.5 (Standards for Institutional Student Conduct Investigation and Disciplinary Proceedings) of the Policy Manual of the Board of Regents of the University System of Georgia. The Student Code of Conduct (Non-Academic Misconduct) may also apply where the Board of Regents policies are silent. Due process rights of the victim and the accused individual will also be observed. If it is determined that a violation of policy has occurred, disciplinary action may be taken, up to and including the expulsion of the offender. The severity of any disciplinary action will depend on the frequency or severity of the offense and the history of past misconduct by the accused. Both parties are notified of the outcome of any disciplinary proceeding.

No-Contact Order

Upon receipt of a report of student sexual misconduct from the Title IX Coordinator, the Office of Student Integrity may issue a mutual no-contact order between the parties involved in the case. The no-contact order prohibits communication between/among the parties, including but not limited to: contact by telephone, email, hand-written note, instant messaging, and text messaging, online postings/message boards, through a third person, or in person. This includes any email or message accounts that are affiliated with the parties' identities. If any party violates the no-contact order, the Office of Student Integrity may pursue additional disciplinary action.

In certain circumstances, the Dean of Students may also impose an interim suspension in accordance with the Code of Conduct.

Student Complaints:

The following provisions apply to processing, investigating and resolving student sexual

misconduct complaints under Georgia Tech's Sexual Misconduct Policy (policylibrary.gatech.edu/student-life/sexual-misconduct): Students are provided information about options for reporting sexual misconduct. Students may file a criminal complaint with GTPD or local police, as appropriate. Students may also file an administrative complaint with the Title IX Coordinator Chris Griffin, at chris.griffin@gatech.edu.

- Students may request confidential assistance from a VOICE Advocate. The VOICE Advocate can help the student file administrative and/ or criminal complaints/reports, seek civil restraining orders or administrative no contact orders, and access support services such as counseling, advocacy, housing assistance, academic support, disability services, health and mental services, and other services, as appropriate.
- Students involved in sexual misconduct investigations and resolutions (both Complainants and Respondents) may receive support services before or after the filing of a complaint or where no complaint has been filed. Support services include counseling, advocacy, housing assistance, academic support, disability services, health and mental services, and other services, as appropriate. The Title IX Coordinator can assist students in accessing support services.
- A student who is a party to a sexual misconduct investigation may have an advisor for the purpose of providing advice and counsel to the party. The advisor may be present during meetings and proceedings during the investigatory and/or resolution process at which his or her advisee is present.
- Throughout any investigation and resolution proceedings, a party will receive written notice of alleged misconduct, be provided an opportunity to respond, and be allowed to remain silent or otherwise not participate in or during the investigation and resolution process without an adverse inference resulting. If a party chooses to remain silent or otherwise not participate in an investigation, the investigation may still proceed and policy charges may still result and be resolved.
- Parties may have the option of selecting informal resolution as a possible resolution in certain cases. Where a matter is not resolved through informal resolution a hearing is set. All sexual misconduct cases are heard by a panel of faculty and/or staff. All institutional participants in the sexual misconduct resolution process are required to receive appropriate annual training as required by the Clery Act and Title IX.
- The standards applicable to sexual misconduct hearings are set forth in Policy 4.6.5 (Standards for Institutional Student Conduct Investigation and Disciplinary Proceedings) of the Policy Manual of the Board of Regents of the University System of Georgia.
- Following a hearing, the parties are simultaneously provided a written decision via institution email of the hearing outcome and any resulting sanctions or administrative actions. The parties are also notified of their appeal rights.

Note: Compliance with these provisions does not constitute a violation of section 444 of the General Education Provisions Act (20 U.S.C. 1232g), commonly known as the Family Educational Rights and Privacy Act of 1974 (FERPA).

Faculty and Staff

Investigations concerning sexual misconduct by a Georgia Tech staff member will be coordinated by the Deputy Title IX Coordinator for Staff. All investigations concerning sexual misconduct by a Georgia Tech faculty member will be coordinated by the Deputy Title IX Coordinator for Faculty. For a list of Title IX Coordinators and Deputy Coordinators, see titleix.gatech.edu/title-ix-coordinators. The investigations will be prompt, fair, and impartial, and shall be conducted by individuals who receive annual training on issues related to sexual harassment, sexual assault, dating or domestic violence, and stalking, and on how to conduct a sexual misconduct investigation process that protects the safety of victims, maintains fairness/ impartiality for accused individuals, and promotes employee accountability.

Faculty or staff investigation procedures will determine findings of fact using the preponderance of the evidence standard, which means that it is more likely than not that a violation of Georgia Tech policy has occurred. If it is determined that a violation of policy has occurred, disciplinary action may be taken, up to and including termination of employment. The severity of any disciplinary action will depend on the frequency or severity of the offense and the history of past misconduct by the employee.

Confidentiality

Although the goal is to limit the number of individuals who may learn about an allegation or investigation of sexual misconduct, Georgia Tech cannot guarantee confidentiality in all cases. Georgia Tech, however, will make reasonable and appropriate efforts to preserve the victim's and accused individual's privacy and to protect the confidentiality of information. To the extent permissible by law, Georgia Tech shall take reasonable steps to avoid inclusion of identifying information about a victim or accused individual from publicly available records. Access to disciplinary records are governed by applicable state and federal laws, including but not limited to FERPA.

Retaliation

Georgia Tech does not tolerate retaliation against anyone who has made a report or complaint, provided information, assisted, participated or refused to participate in any manner in the sexual misconduct process. Anyone who believes that they have been subjected to retaliation should immediately contact the Title IX Coordinator or a Deputy Title IX Coordinator. Any person found to have engaged in retaliation in violation of this Policy may be subject to disciplinary action. For more information, see the Georgia Tech Non-Retaliation Policy at

<http://policylibrary.gatech.edu/employment/non-retaliation-policy> and the University System of Georgia's Sexual Misconduct policy at <https://www.usg.edu/policymanual/section6/C2655>.

Sex Offender Registry

China does not maintain a sex offender registry. Information about an individual's past criminal history is not made available to the public.

Definitions of Reportable Clery Act Crimes and Geography

Primary Crimes

Murder / Manslaughter: *The willful killing of one human being by another.*

Negligent Manslaughter: *The killing of another person through gross negligence.*

Sex offenses: *Any sexual act directed against another person, without the consent of the victim, including instances where the victim is incapable of giving consent.*

Rape: *The penetration, no matter how slight, of the vagina or anus with any body part or object, or oral penetration by a sex organ of another person, without the consent of the victim.*

Fondling: *The touching of the private body parts of another person for the purpose of sexual gratification, without the consent of the victim, including instances where the victim is incapable of giving consent because of his/her age or because of his/her temporary or permanent mental incapacity.*

Incest: *Non-forcible sexual intercourse between persons who are related to each other within the degrees wherein marriage is prohibited by law.*

Statutory Rape: *Non-forcible sexual intercourse with a person who is under the statutory age of consent.*

Robbery: *The taking or attempting to take anything of value from the care, custody, or control of a person or persons by force or threat of force or violence and/or by putting the victim in fear.*

Aggravated Assault: *Unlawful attack by one person upon another for the purpose of inflicting severe or aggravated bodily injury. This type of assault usually is accompanied by the use of a weapon or by means likely to produce death or great bodily harm.*

Burglary: *Unlawful entry of a structure to commit a felony or a theft.*

Motor Vehicle Theft: *The theft or attempted theft of a motor vehicle.*

Arson: Any willful or malicious burning or attempt to burn, with or without intent to defraud, a dwelling, house, public building, motor vehicle or aircraft, or personal property of another, etc.

Hate Crimes

Hate Crimes: Includes all of the crimes listed above that manifest evidence that the victim was chosen based on one of the categories of bias listed below, plus the following crimes.

Larceny/Theft: This includes pocket picking, purse snatching, shoplifting, theft from a building, theft from a motor vehicle, theft of motor vehicle parts or accessories, and all other larceny.

Simple Assault: An unlawful physical attack by one person upon another where neither the offender displays a weapon, nor the victim suffers obvious severe or aggravated bodily injury involving apparent broken bones, loss of teeth, possible internal injury, sever laceration, or loss of consciousness.

Intimidation: To unlawfully place another person in reasonable fear of bodily harm through the use of threatening words and/or other conduct but without displaying a weapon or subjecting the victim to actual physical attack.

Destruction/Damage/Vandalism or Property (except arson): To willfully or maliciously destroy, damage, deface, or otherwise injure real or personal property without the consent of the owner or that person having custody or control of it.

Categories of Bias

Racial Bias: A preformed negative opinion or attitude toward a group of persons who may possess common physical characteristics genetically transmitted by descent and heredity, which distinguish them biologically as a distinct division of humankind.

Ethnicity/National Origin Bias: A preformed negative opinion or attitude toward a group of persons whose members identify with each other through a common heritage, often consisting of a common language, common culture (often including religion) and/or ideology that stresses common ancestry.

Religious Bias: A preformed negative opinion or attitude toward a group of persons who share the same religious beliefs regarding the origin and purpose of the universe and the existence or nonexistence of a supreme being.

Disability Bias: A preformed negative opinion or attitude toward a person or groups of people who have physical or mental impairments/challenges, whether such disability is temporary or permanent, congenital, or acquired by heredity, accident, injury, advanced age, or illness.

Sexual Orientation Bias: A preformed negative opinion or attitude toward a person's physical, romantic, and/or emotional attraction to members of the same and/or opposite sex.

Gender Bias: A preformed negative opinion or attitude toward a person or groups of people who have been assigned male or female at birth.

Gender Identity Bias: A preformed negative opinion or attitude toward a person's internal sense of being male, female, or a combination of both.

Arrest and Referral Crimes

Weapons Offenses: The violation of laws or ordinances prohibiting the manufacture, sale, purchase, transportation, possession, concealment, or use of firearms, cutting instruments, explosives, incendiary devices, or other deadly weapons.

Drug Laws: The violation of laws prohibiting the production, distribution, and/or use of certain controlled substances and the equipment or devices utilized in their preparation and/or use. The unlawful cultivation, manufacture, distribution, sale, purchase, use, possession, transportation, or importation of any controlled drug or narcotic substance. Arrests for violations of state and local laws, specifically those relating to the unlawful possession, sale, use, growing, manufacturing, and making of narcotic drugs.

Liquor Laws: The violation of state or local laws or ordinances prohibiting the manufacture, sale, purchase, transportation, possession, or use of alcoholic beverages, not including driving under the influence and drunkenness.

Dating Violence, Domestic Violence, and Stalking

Dating Violence: Violence committed by a person who is or has been in a social relationship of a romantic or intimate nature with the victim.

Domestic Violence: A felony or misdemeanor crime of violence committed:

- By a current or former spouse or intimate partner of the victim;
- By a person with whom the victim shares a child in common;
- By a person who is cohabitating with or has cohabitated with the victim as a spouse or intimate partner;
- By a person similarly situated to a spouse of the victim under the domestic or family violence laws of the jurisdiction in which the crime of violence occurred, or
- By any other person against an adult or youth victim who is protected from that person's acts under the domestic or family violence laws of the jurisdiction in which the crime of violence occurred.

Stalking: Engaging in a course of conduct directed at a specific person that would cause a reasonable person to:

- (i) Fear for his or her safety or the safety of others; or
- (ii) Suffer substantial emotional distress.

Annual Security Report Crime Statistics

The crime data from 2018 to 2020 in the area of 133 Tangxing Road in the Nanshan District of Shenzhen and nearby passageways is reported below.

	2018	2019	2020
Criminal Homicide (Murder or Manslaughter)	0	0	0
Sex Offenses	0	0	0
Robbery	0	0	0
Aggravated Assault	0	0	0
Burglary	0	0	0
Motor Vehicle Theft	0	0	0
Arson	0	0	0
Larceny-Theft	0	0	0
Simple Assault	0	0	0
Intimidation	0	0	0

Destruction/Damage/Vandalism of Property	0	0	0
Hate Crime	0	0	0
Stalking	0	0	0
Dating Violence	0	0	0
Domestic Violence	0	0	0
Weapons: Carrying, Possessing, etc.	0	0	0
Drug Abuse Violations	0	0	0
Liquor Law Violations	0	0	0

Annual Student Housing Fire Safety Report

Student housing in Shenzhen is used by Georgia Tech-Shenzhen by agreement with Shenzhen Government. Per the Clery Handbook on-campus definition (34 CFR 668.46(a), Georgia Tech-Shenzhen controls student housing.

Students on the Georgia Tech-Shenzhen campus are expected to follow Institute policies for fire safety. The housing facilities have fire alarm systems equipped with smoke detection. Fire evacuation drills are performed a couple of times a year by the local fire department and the property management company. Direction on evacuation procedures are provided by building management. Evacuation maps are posted in resident hallways. In case of fire, students are instructed to call the local fire department by dialing 119.

Georgia Tech-Shenzhen Student Housing Fire Safety Overview – 2020

Buildings	Number of Beds	Fire Alarm System	Sprinkler System	Date Constructed	Last Renovation	Scheduled Renovation	Evacuation Drills Completed
B55	406	Yes	--	--	2018	No	2

Georgia Tech-Shenzhen Student Housing Fire Statistics Log: 2018-2020

There were no reported fire incidents in Georgia Tech-Shenzhen on-campus student housing in 2018, 2019 or 2020.

Buildings	Date	Time	Fires	Fire Cause	Injuries	Deaths	Property Damage
B55	--	--	--	--	--	--	--
Total	0	0	0	0	0	0	0

Other Important Numbers

You may contact the following departments for more information about the topics covered in this brochure:

Georgia Tech-Shenzhen	404-385-1341
Campus Police	404-894-2500
Counseling Center	404-894-2575
Dean of Students	404-894-2564
Health Initiatives.....	404.894.9980
VOICE Advocate.....	404.385.4464
	or 404.385.4451
VOICE Sexual Violence Information Line	404.894.9000
Human Resources.....	404.894.4847

Other Emergency Numbers

Georgia Tech Counseling Center.....	404-894-2575
National Suicide Prevention Lifeline	1-800-273-TALK
Sexual Assault Information Line	404-894-9000